

Education Budget

Article 10



Pre-K

1. Adds 750 high quality RI Pre-K seats through various investments.
2. The Administration is proposing \$4.5M to expand RI Pre-k. Combined with the \$3M in additional federal funds, we will be able to expand to a total of 2,170 RI Pre-K seats.
3. This is more than a 50% increase in seats from last year.



Increased funding for Multilingual Learners - \$2.5M

1. The FY21 budget will include \$7,500,000 in funding for the MLL categorical. The MLL funding is restricted and may only be used to support and expand high-quality services for English Language Learners across RI.
2. RIDE will require that funds serve targeted, research-based supports and programming to increase the achievement of MLLs.



Wavemaker - \$400,000

1. This budget article language expands the “Stay Invested In RI Wavemaker Fellowship” to STEM teachers. This program incentivizes graduates to stay in RI and teach in STEM-related fields by offering tax credits that defray the costs of student loans.



Mental Health Professionals - \$2M

1. This budget article would increase the funding of the SRO categorical to the previously enacted level of \$2M and expand the eligible positions that can be funded out of the categorical.
2. The expanded positions will include student assistance counselors, school counselors, Social Workers, School Psychologists and other positions focused on behavioral and mental health services for children.
3. The categorical provides 50% of the funding for the new position.



Mental Health Teacher training - \$590,000

1. The budget proposes \$590,000 to fund teacher training for classroom-based mental health interventions.
2. Teachers have asked for strategies to support Social Emotional Learning (SEL) within their classrooms, and this investment would directly address that need.



Early Learning Facilities Bond will Provide Critical Capital



- Article 10 establishes the fund that would then be funded through subsequent bonds.
- Children need high-quality, developmentally appropriate early learning environments.
- The 2019 Early Learning Facilities Needs Assessment indicates more than half of buildings used for classrooms are in “poor” condition.
- Early learning spaces have many unique requirements and features that support the cognitive development of young children. These space configurations are often not practical for other industries, making facility investments difficult to pursue.
- There is a shortage of available space for child care providers to expand. In RI, there are 24 municipalities that have more than 3 infants and toddlers needing care for every 1 licensed slot available.



Early Learning Facilities Bond Breakdown



Article 10: 7-6-107-3 (Rhode Island Promise)

- Lifts the sunset on Rhode Island Promise
 - eligibility currently ends with the high school graduating class of 2020
- Expands eligibility to recent high school graduates students in certificate programs
 - Currently only open to those in associate degree programs
 - “Certificate” means any certificate program with labor market value as defined by the 16 Postsecondary Commissioner
- Omits DCYF’s Higher Education Opportunity Incentive Grant and the College Crusade Scholarship from the last-dollar funding formula

Rhode Island Promise Budget

Fiscal Year	RI Promise Expenditure	Federal Pell and SEOG Funding for RI Promise students
FY18 (actual)	\$3,061,851	\$3,611,365
FY19 (actual)	\$5,597,021	\$7,764,655
FY20 (near final – unlikely to change – as of 7/2020)	\$6,872,057	\$9,431,146
FY21 (projected as of 7/2020)	\$7,233,864	\$9,982,732
FY22 (no projected growth)	\$7,233,864	\$9,982,732
FY23 (no projected growth)	\$7,233,864	\$9,982,732

COMMUNITY COLLEGE OF RHODE ISLAND

Rhode Island Promise

By 2025

70% of jobs created in
Rhode Island will require
a college credential

Today

47% of working-age
Rhode Islanders have a
college credential



Section 1

RI Promise Performance

As we welcome our 4th RI Promise cohort, we are pleased to report that the RI Promise Program is achieving its legislative goals while also addressing equity gaps.



Legislative Goal 1: Increase the number of students enrolling at CCRI

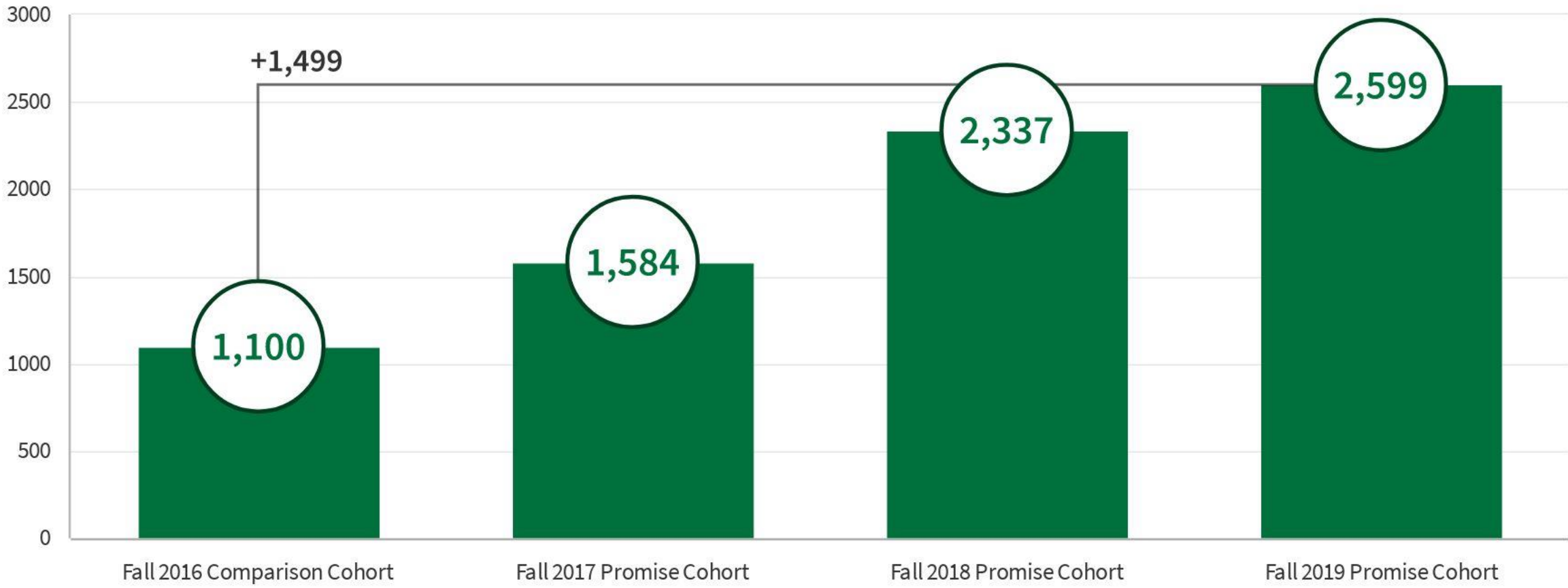


Legislative Goal 2: Increase the number of students completing degrees on time at CCRI

LEGISLATIVE GOAL 1: INCREASE THE NUMBER OF STUDENTS ENROLLING AT CCRI

136% increase in student enrollment

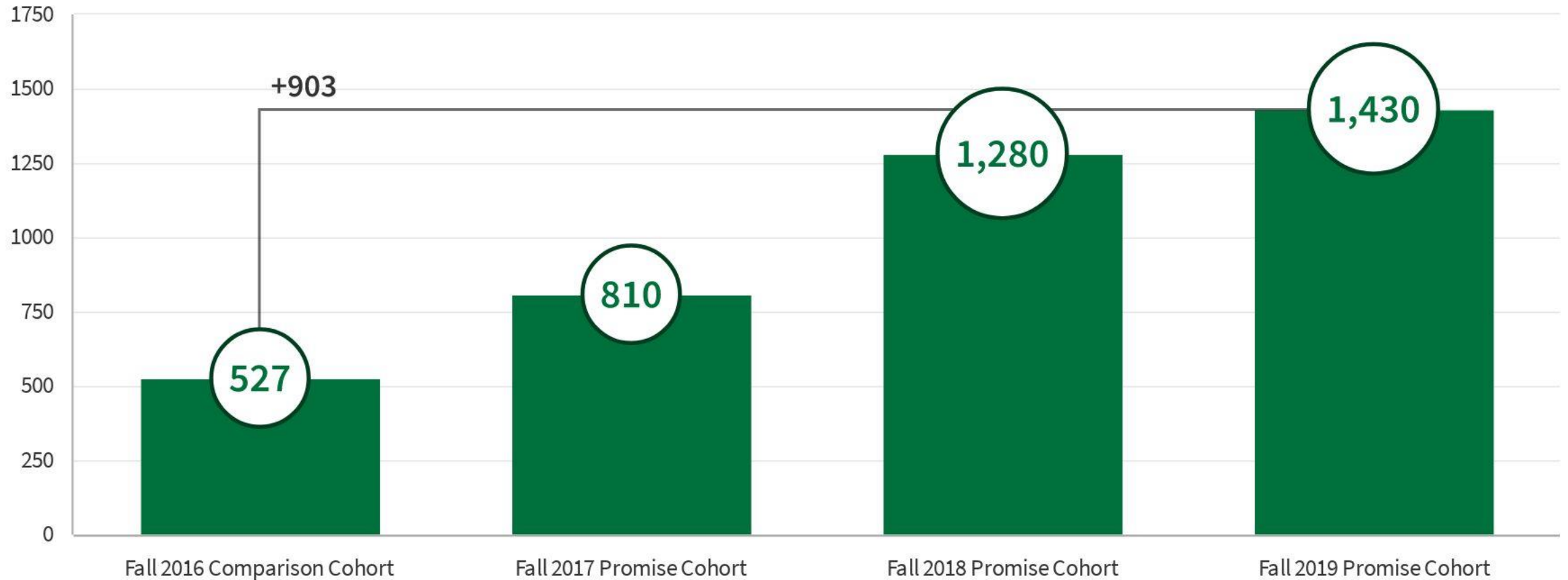
First-time, full-time direct from high school Rhode Islanders



LEGISLATIVE GOAL 1: INCREASE THE NUMBER OF STUDENTS ENROLLING AT CCRI

171% increase in low-income student enrollment

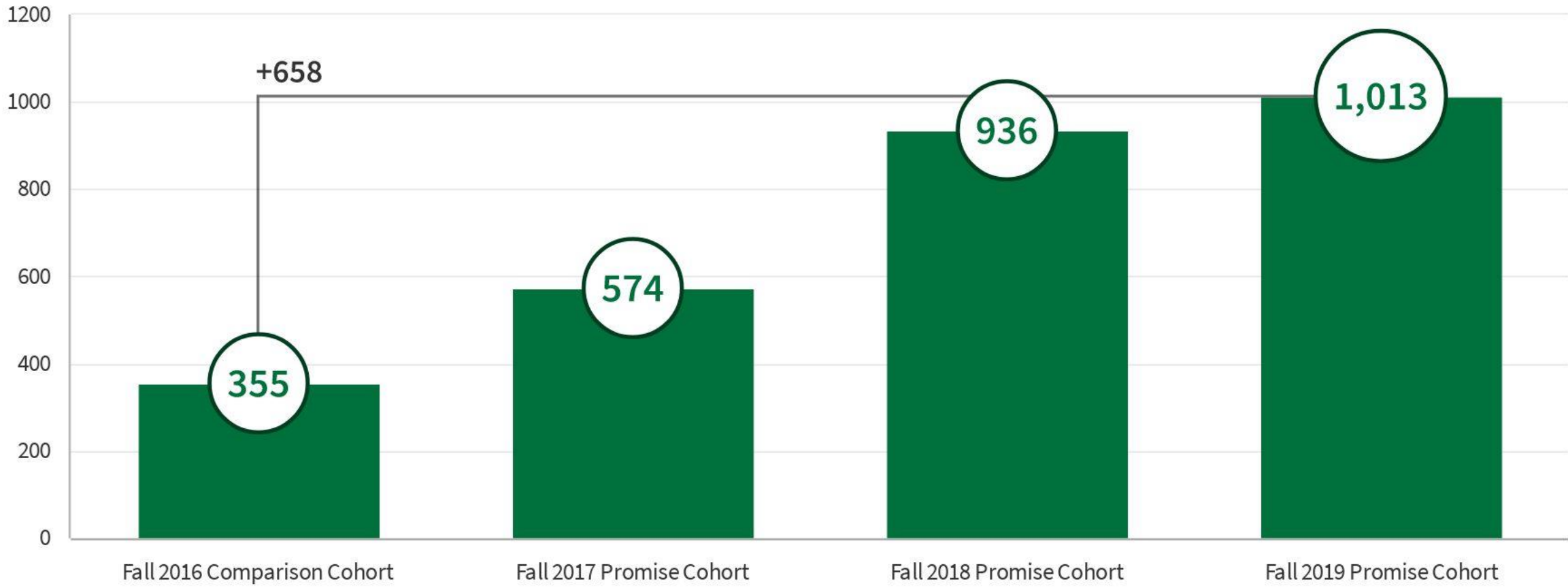
First-time, full-time direct from high school Rhode Islanders receiving a Pell Grant



LEGISLATIVE GOAL 1: INCREASE THE NUMBER OF STUDENTS ENROLLING AT CCRI

185% increase in students of color

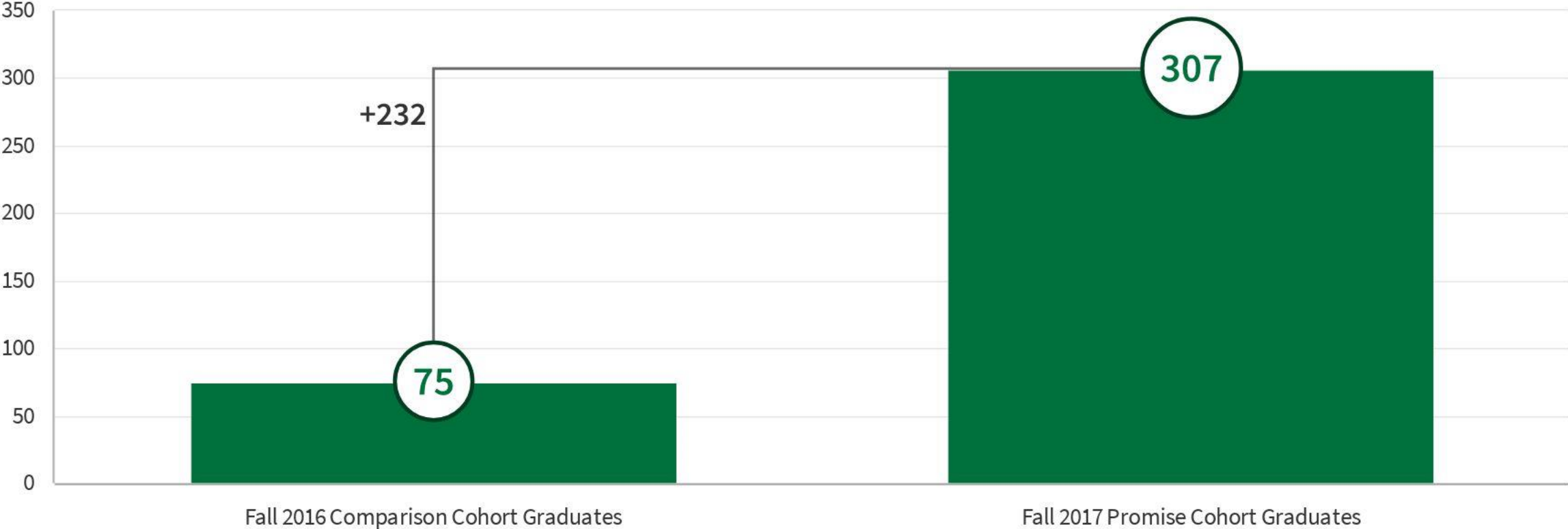
First-time, full-time direct from high school Rhode Islanders



LEGISLATIVE GOAL 2: INCREASE THE NUMBER OF STUDENTS COMPLETING DEGREES ON TIME AT CCRI

The first cohort of RI Promise students achieved a **19 percent two-year graduation rate**, compared to 4 percent historically.

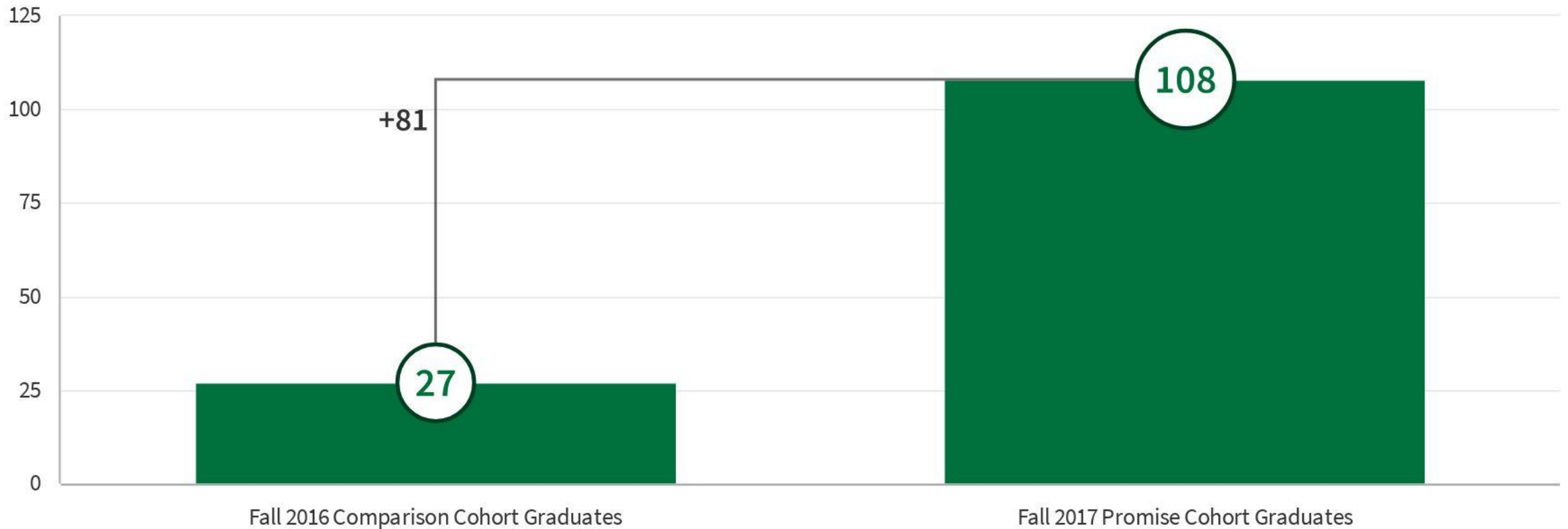
4x more Rhode Islanders graduating in 2 years



LEGISLATIVE GOAL 2: INCREASE THE NUMBER OF STUDENTS COMPLETING DEGREES ON TIME AT CCRI

Low-income students in the Promise program achieved a **15 percent two-year graduation rate**, compared to 3 percent historically.

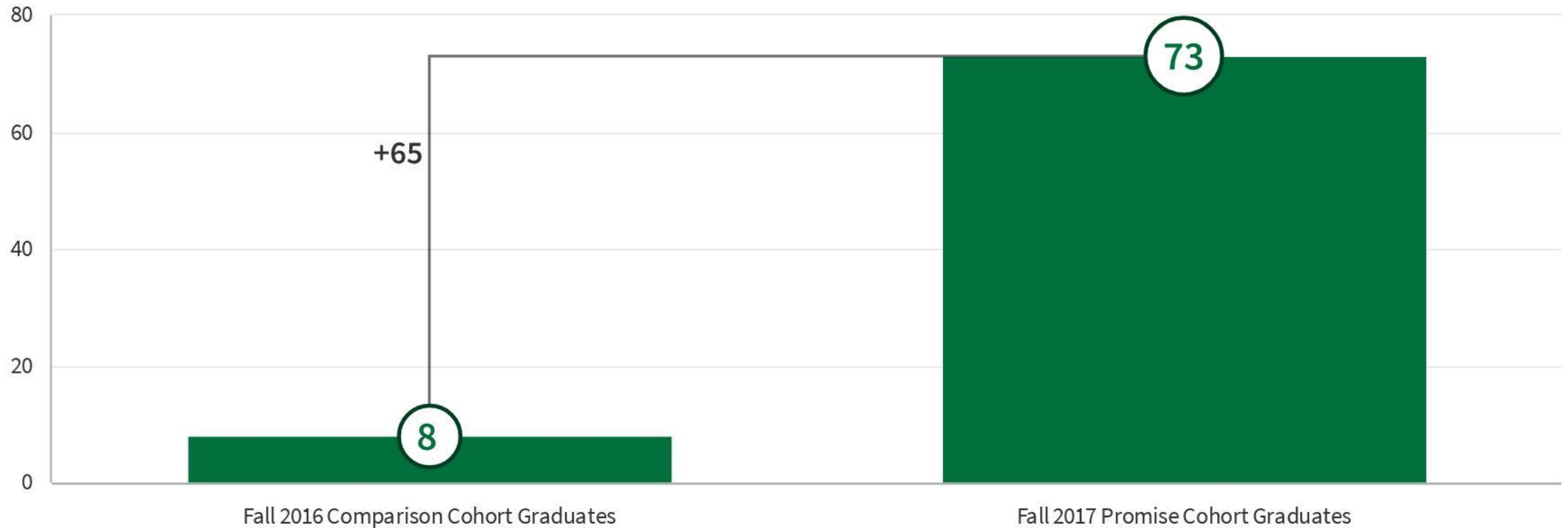
4x more low-income students graduating in 2 years



LEGISLATIVE GOAL 2: INCREASE THE NUMBER OF STUDENTS COMPLETING DEGREES ON TIME AT CCRI

Students of color in the Promise program achieved a **13 percent two-year graduation rate**, compared to 2 percent historically.

9x more students of color graduating in 2 years



Section 2

Proposed Promise Changes

Governor Raimondo has requested three changes to the current RI Promise legislation that build upon the program's successes and ensure that RI has a more competitive, well-educated workforce when we come out of the pandemic.



1) Remove the sunset provision.



2) Allow the program to support certificate-seeking Rhode Islanders.



3) Allow DCYF and College Crusade funding for our most vulnerable students.

PROPOSED PROMISE CHANGES

Remove the sunset provision.



The current Promise legislation is structured as a four-year pilot program. **This change would make the program permanent.**

By removing the sunset provision in the current legislation, we can make sure that all first-time, full-time, Rhode Island residents who graduate from high school have access to a **job-ready college education without worrying about the cost of tuition and fees.**

PROPOSED PROMISE CHANGES

Allow the program to support certificate-seeking Rhode Islanders.



The current legislation provides Rhode Island Promise funding exclusively for students enrolled in associate degree programs. CCRI also offers many **certificate programs that are in high demand in the labor market, including biotechnology, CNC manufacturing, energy utility technology, medical insurance billing, and phlebotomy.**

This policy change would allow Promise funding to apply to these programs as well. For some students, this will provide them with **an opportunity to get practical, career-oriented college credentials in a shorter period of time.**

PROPOSED PROMISE CHANGES

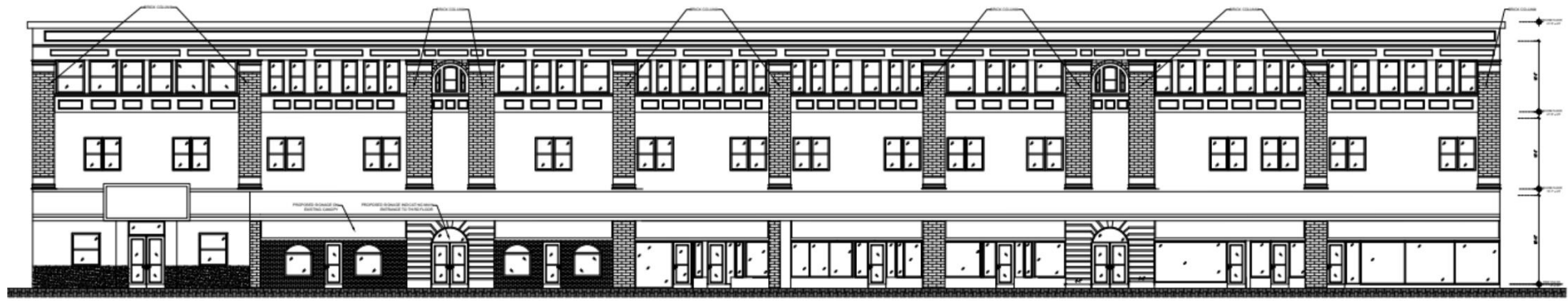
Omit DCYF and College Crusade funding from Promise Scholarship calculation.



This policy change would exclude DCYF and College Crusade funding from the calculation of a student's Promise Scholarship. Currently, any Crusaders or DCYF students who are above the federal Pell range would have those funds used as “first-dollar”. **With this change, students would be able to hang onto those funds for books, transportation, and other expenses.**

In practice, this is a very small change as nearly all of these students are federally Pell-funded. **The estimated annual cost to the state would be less than \$25K for Crusaders and \$0 for DCYF.**





1 PROPOSED FRONT ELEVATION
 A-2.0 SCALE: 1/8"=1'-0"

95-117 Main Street, Woonsocket

RENT	\$12.75 sq.ft.
TERM	10 years
SQ. FT.	15,000 (entire 3 rd floor)
Private investment	\$400,000



1
A-2.0 PROPOSED FRONT ELEVATION
SCALE: 1/8"=1'-0"

JOBS

VIA
THE

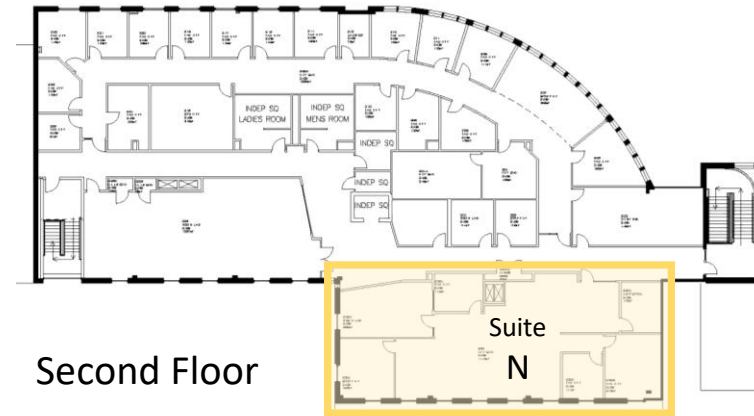
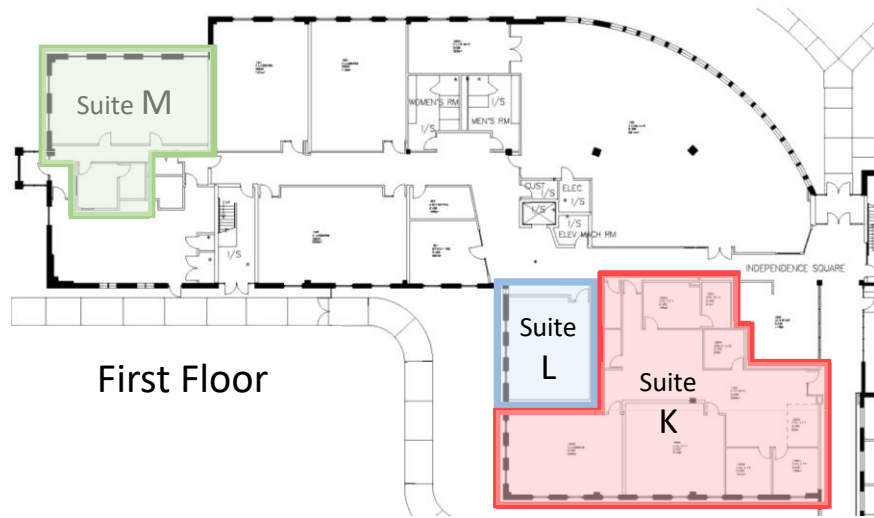
WESTERLY MODEL

Education & Training

Public-Private
Self-supporting

- Cybersecurity/IT
- Pharmacy technician
- English as a Second Language
- Process technology
- Job training for individuals with developmental disabilities who will work at CVS

- Skills for Rhode Island's Future
- Northern RI Chamber
- Governor's Workforce Board
- RI OPC
- RI DLT
- CVS
- Fidelity
- AAA
- Community College of RI
- Rhode Island College



	2012	2013	2014	2015	2016	2017	2018	2019	2020	2021	2022	2023	2024	2025	2026	2027	2028	2029	2030	2031	2032	2033	2034
Suite L	Original Lease Term																						← EL
Suite N						Original Lease Term					Extended Lease Term												
Suite M									O.L.T.		Extended Lease Term												
Suite K										O.L.T.		Extended Lease Term											

Suites L & M - Kinesiology Research Labs

Suite K - Communicative Disorders Faculty Offices & Classroom

Suite N - Kinesiology and Health Professions Faculty Offices & Health Professions Research Lab

INDEPENDENCE SQUARE LEASE EXTENSION